

**Head rail:**

The head rail is a steel profile, U-shaped, cold-rolled, galvanized, 58x56x0.65 mm, hemmed on both sides, open down. It serves to connect the guide rails and to place the control (it is a self-supporting system of the blind, so the head rail does not have to be anchored to the building).

Slats:

Aluminum slats 96 mm wide, 0.6mm thick, cold-rolled, U-shaped, arched, hemmed on both sides, no tape holes, highly flexible special alloy, resistant to cracks, scratches and impacts, surface finish – two-layer baked varnish. The slat is equipped with stainless steel clips for slats which can be easily replaced with new ones in case of damage. A rubber sealing profile is rolled in the front hem and it serves for better fitting of slats, and thus a better blackout is provided. In the basic offer you can choose from 23 slat colours. The slats are open when running up and down. The slats can only be tilted in the lower end position.

Slat guiding:

Guide rails are made of extruded aluminum profile, standard surface finish is silver anodized but they are available in RAL powder colours for an extra charge. The guide rails are provided with a black rubber seal for noise reduction when the blind is running. They can be mounted laterally on the reveal or with fixed brackets on the window frame. With the help of built-in cases, the guide rails can also be mounted in the reveal. Thanks to the unique control mechanism, which is hidden in the guide rails, the structure is made without the bottom rail, ladders, pulling tapes and without cutting holes in the slats. The metal pins protrude from the guide rail and the slats are fixed to them at both ends of the slats.



Shaft:

The shaft is made of extruded aluminum profile of a round shape Ø 14 mm with a groove.

Control:

1. Crank control:

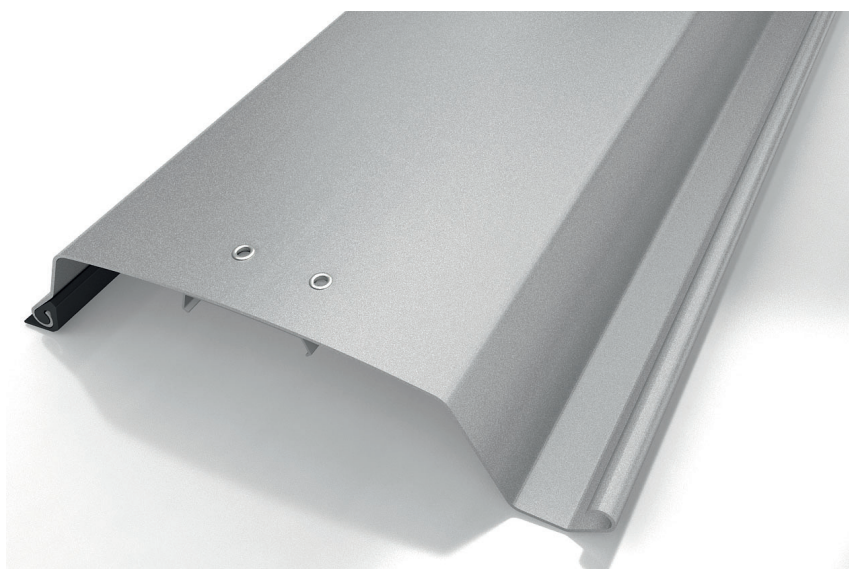
Pulling and lowering of the slats and tilting of the slats is done by means of a hand crank and a maintenance-free bevel gearbox with a 2:1 ratio or a 3:1 ratio – according to the size of the plate of slats. The bushing with an articulated bearing is pulled into the interior using a cardan □ 6x6 mm, or □ 8x8 mm. The crank rod is made of aluminum profile Ø 15.5 mm, with a banding handle and a plastic holder, powder-coated in white and grey.

2. Motor control:

Pulling and lowering of the slats and tilting of the slats is ensured by the central electric motor 230 V/AC, 50 Hz, IP 54. Each motor is equipped with the upper and lower end stops set at the factory, and with a thermal fuse. The motor includes a short cable with an integrated Hirschmann 3 cable connector. Motors can be operated with wall-mounted switches, remote radio controls or various central control systems.

Painting:

In the case of RAL powder coating, the products are painted according to the GSB standard.



basic colours

