

# ROLLER SHUTTERS

or

# EXTERNAL BLINDS



## external roller shutters

External roller shutters are made of aluminum or plastic slats which are connected to each other to form a compact unit, the so-called plate. It is placed in a box that can be visible or built-in under the facade.

The plate of the roller shutter cannot be tilted, you can pull it down to the middle of the window.

External roller shutters are used not only as protection against the sun and against heat leakage which significantly increase the insulating ability of windows, but they also provide excellent noise protection. They reduce both noise and dust and prevent the penetration of heat into the room.



They can be easily combined with a roll-up insect screen. They are great weather protection that protects all types of windows from bad weather. They can act as a safety feature. They are a difficult obstacle for burglars and break-ins.

- + energy saving for heating
- + they enable shading and ventilation at the same time
- + they aesthetically complete the appearance of the house
- + they allow you to darken or create semi-darkness
- + they ensure privacy and restful sleep in the dark
- + wide choice of shapes and colours of slats
- the slats cannot be tilted

ADVANTAGES  
?  
DISADVANTAGES

### FRONT-MOUNTED



With this type, the box for winding the plate is visible from outside the building. It can also be installed in any rectangular opening.

When using the front-mounted box, you can combine roller shutters with an integrated insect screen.

### BUILT-IN



The slats are wound into a built-in box. Part of the box is hardened polystyrene XPS which excels in excellent insulating properties. When the roller shutter is retracted, only the guide rails that are attached to the window frame or to the reveal, the inspection flap and the end slat are visible.

If you want to use the built-in box, you have to take it into account already at the project stage. Roller shutters can be combined with an integrated insect screen in this box, too.

### FOR THE HELUZ LINTEL



In this case, roller shutters are installed in special lintels. It is a very clean and elegant solution where the roller shutter system becomes a part of the building.

Roller shutter lintels are installed during the construction of the house and must be taken into account at the project stage.



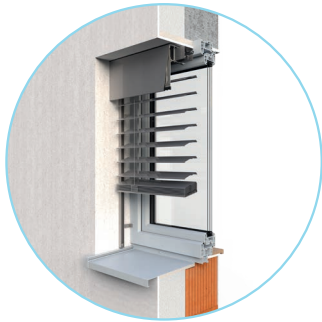
In contrast to external roller shutters, the slats of external blinds can be tilted. By correctly adjusting the slats, you can protect the room from the sun's rays, and you can look out at the same time. You can have windows open and allow fresh air to enter the room, or you can leave them partially open and shade only the greatest heat, or lower them completely and shade the room totally.

External blinds significantly reduce the energy consumption of buildings. You save on air conditioning.

- + continuous light regulation
- + they enable shading and ventilation at the same time
- + energy saving for air conditioning
- + they ensure privacy in the interior
- + wide choice of shapes and colours of slats
- + they aesthetically complete the appearance of the house
- in very strong winds, the slats need to be retracted

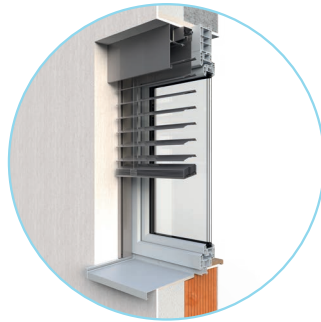


## WITH ALUMINUM COVER PLATE



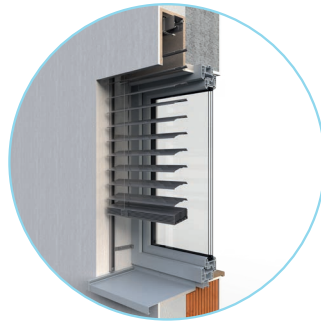
The aluminum cover plate covers the head rail and the stack of slats, and protects them from the weather when the blinds are retracted. Its colour can be tuned with the colour of blinds or facade.

## IN SELF-SUPPORTING COMFORT SYSTEM



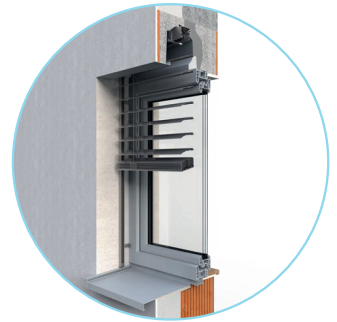
The solution is suitable for quicker and easier installation and when the head rail cannot be attached to the building. In this case, the blind is anchored via guide rails to the reveal or to the window frame.

## IN BUILT-IN BOX



The blind box is designed for plastering and is not visible on the building facade. Built-in boxes have to be taken into account at the project stage. We offer several types of built-in boxes.

## IN THE HELUZ LINTEL



It is a standard lintel into which blinds can be installed even after the construction is finished.

## usage

External roller shutters are mostly used in rooms where people sleep and relax, external blinds in rooms of daily activities.

If you have a cottage in which you do not stay all year round, we recommend that you buy rather external roller shutters on its windows. That increases the protection of the building.

External blinds can be used in most projects. In addition, roller shutters have their dimensional limits on large or irregularly segmented glass surfaces.

If you live in a place with strong winds, it is better to buy front-mounted roller shutters.



## control types

Both external blinds and roller shutters can be operated either manually or by a motor using a remote control or mobile applications.

You can also use a wireless timer to set easily the automatic lowering or retracting.

Both products can also be equipped with a sun sensor to protect the interior from sun rays by automatic lowering or retracting the shading.

